



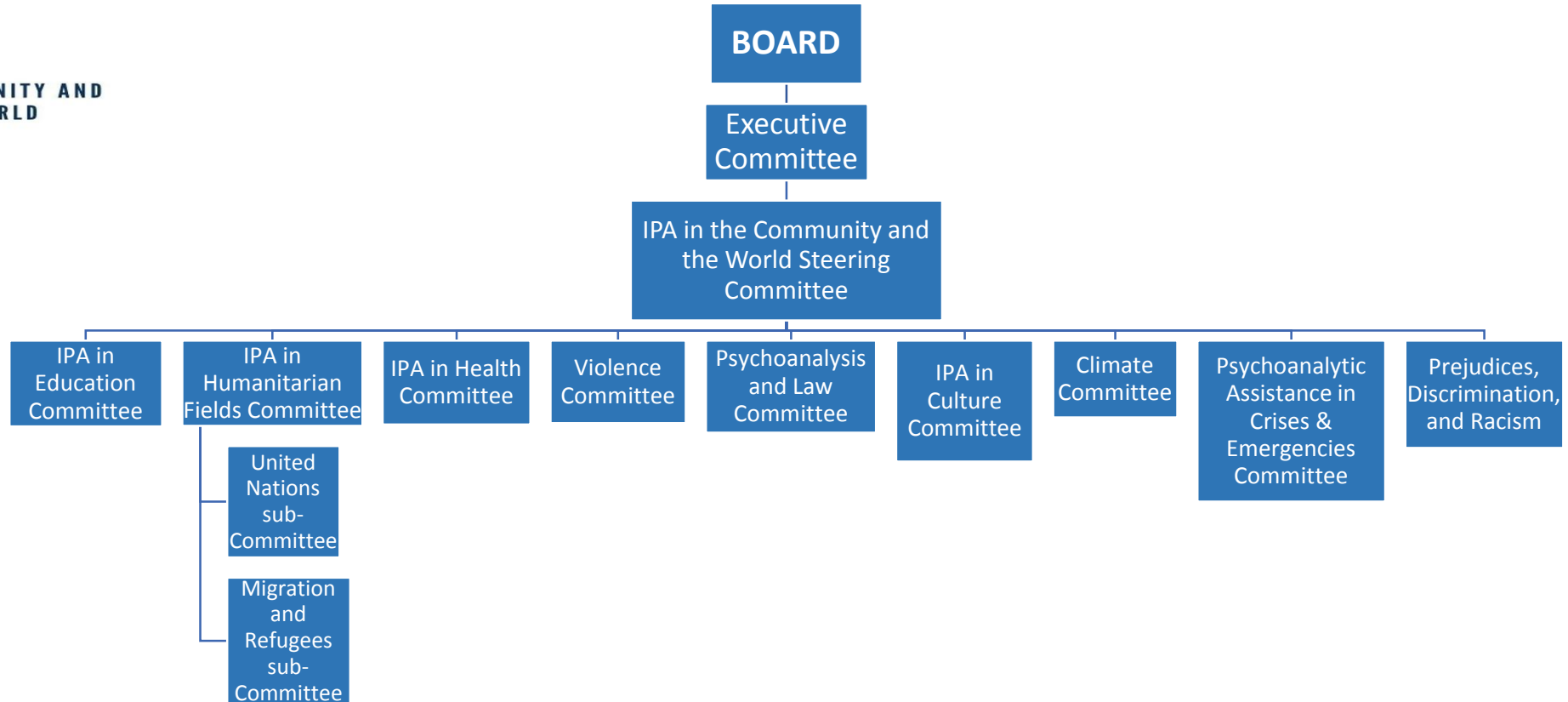
**IPA
IN THE
COMMUNITY AND
THE WORLD**

Acknowledging psychoanalytic contributions to societal issues

82 cttee members + 10 consultants,
Hundreds of engaged analysts from all over.



ORGANOGRAM – IPA IN THE COMMUNITY AND THE WORLD COMMITTEES





Timeline of establishment 12 Cttees C&W

- **1997** UN
- **2014** Law

Establishing “**IPA in the Community**” (V. Ungar & S. Nick) 6 cttees

- **2017** Health; Culture; Education; Humanitarian org.
- **2018** Violence
- **2020** Climate

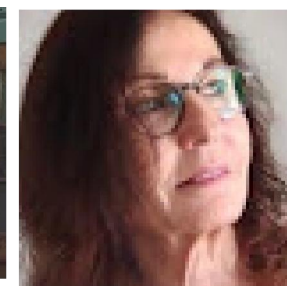
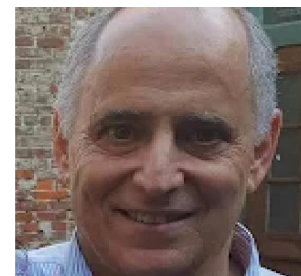
Establishing “**IPA in the Community and the World**” (H. Wolfe & A. Prengler) 4 cttees

- **2021** Steering Committee IPA in the C&W
- **2021** Psychoanalytic Assistance in Crisis and Emergency
- **2022** Response Team
- **2023** Prejudice Discrimination and Racism



IPA in the C&W 12 Committees, Profile

- Steering Cttee (14+2) 2021
Response team (3) 2022
- Climate (8) 2020
- IPA in Culture (8+2) 2017)
- IPA in Education (5+1) 2017
- IPA in Health (11) 2017
- IPA in Humanitarian Field (8)
UN (4+1) 1997)
Migration & Refugee (7) 2017
- Psychoanalysis and Law (7+3) 2014
- PACE (13+1) 2021
- Prejudice Discrimination Racism Cttee (5) 2023
- Violence Cttee (5+1) 2018



IPA engagement in society



Three strategic Tiers:

- **Strategy of IPA Community & World**
- **Strategy of Steering Committee**
- **Strategy for the IPA, having an “impact on the world”**

Tier I – Strategy of the IPA C&W cttees

Climate. Culture, Education, Health, Humanitarian, Law, PACE, PDR, Violence

From the mandates

- **Collect data** from around the world regarding work being done by IPA members in the field of the relevant committee.
- Promote the organisation **of interdisciplinary events** focused on psychoanalysis.
- Develop **bridges between the IPA and practitioners in the field**, to enhance the interchange of experiences, the development of theories, etc.
- Use **prizes** to encourage new/highlight existing high-quality work at the intersection of psychoanalysis and the relevant field.

• Sww3



IPA
IN THE
COMMUNITY AND
THE WORLD



Tier II - Strategy of the Steering Committee

- **Steer and coordinate** the work being done by the various committees in the IPA and the Community and World area.
- Ensure the committees have a **strong focus on external impact.**
- Make connections with other organisations and groups to ensure wide engagement.
- **Encourage the spread of psychoanalytic theory and ideas beyond the consulting room.**
- Liaise closely with the **IPA's communications organs** to ensure a high profile for this work, both within the IPA and externally.
- To **empower** each other ctte
- **Consult to the Board**

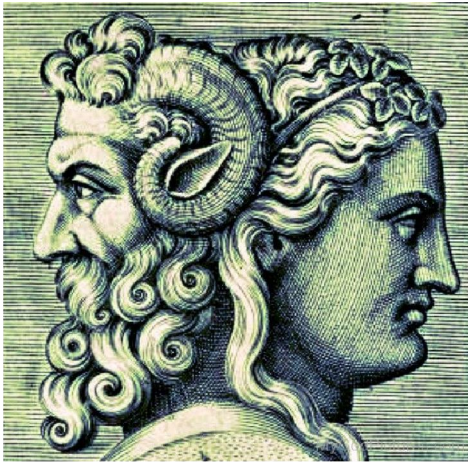


IPA
IN THE
COMMUNITY AND
THE WORLD

Strategy for having an "impact on the world"

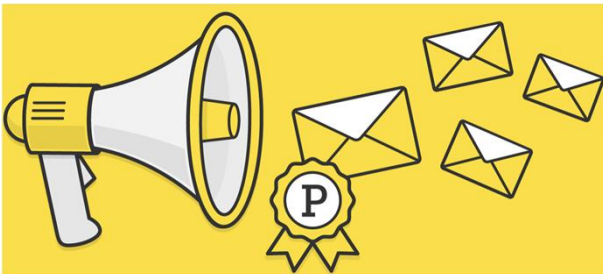
notable, visible, and constructive impact on the world

ON/OFF the Couch



- Include societal perspective in PA training
- Develop Group Relations Conferences in the IPA

Broadcast



Books :

- *Applying PA in medical care*
- *Mind in Line of fire*
- *Trauma, Flight and Migration, PA Perspectives*
- *PA and Law in the Line of Fire*

Website Resources:
Webinars
podcasts
Seminars

Reach Out



- React to needs PACE, M&R
- Response Team
- Prizes

C&W bookshelf, 4 with more to come

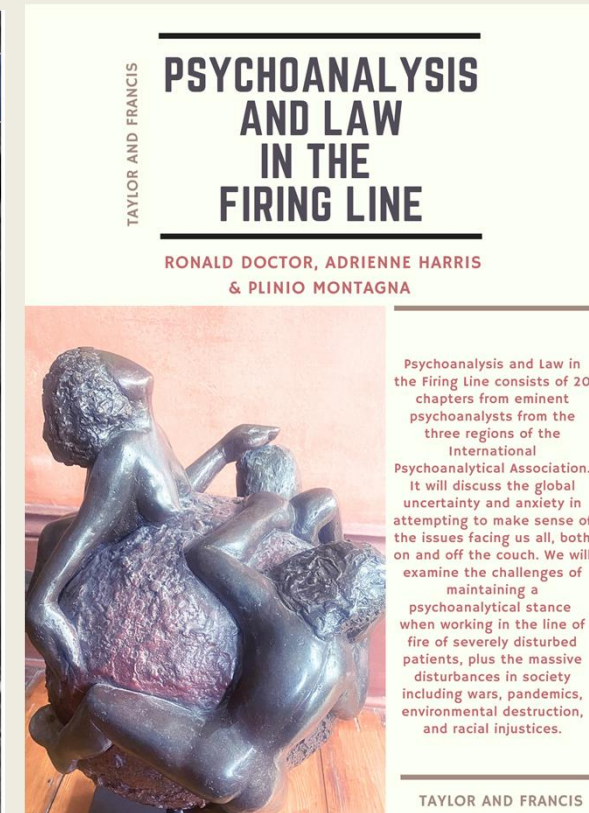
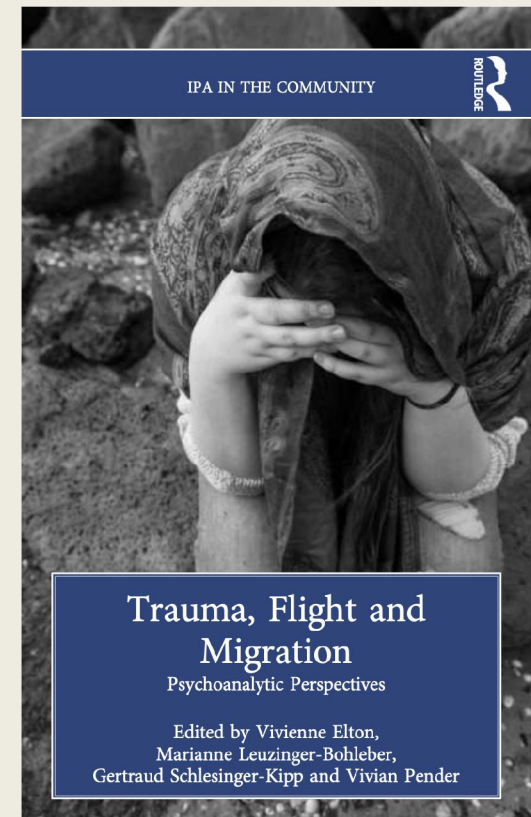
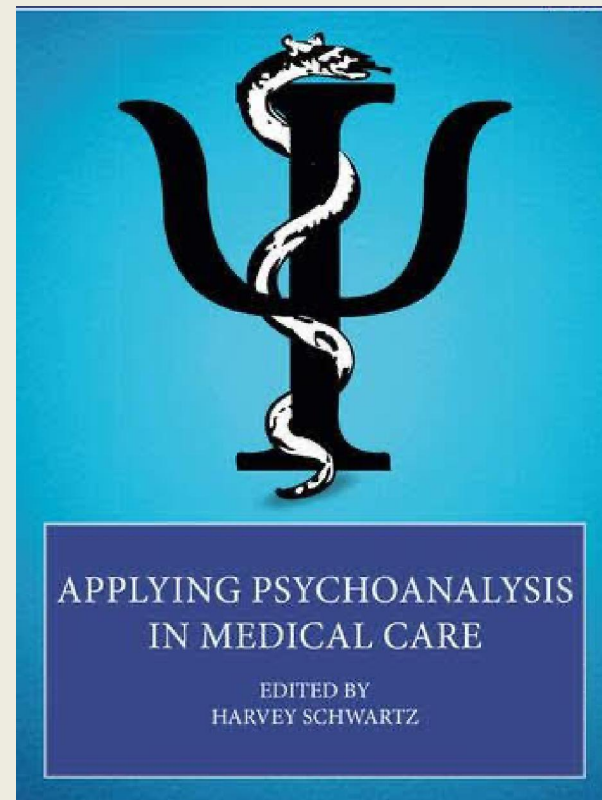


Steering Cttee

IPA in Health

Migration &
Refugee cttee

Psychoanalysis and
Law





**IPA
IN THE
COMMUNITY AND
THE WORLD**